



## 10 Parolles Close

Warwick Gates, Warwick, CV34

Asking Price £279,950



3 Bed End Terrace House with Garage & Drive (1 Double and 2 singles). Entrance Hall & cloakroom, Lounge Diner to rear with French doors, Kitchen to front. White Goods, Southerly rear Great access for schools, M40 & A46 No Onward Chain.



#### Entrance Hall

12'0" x 3'6" (3.66 x 1.07)

Entered via double glazed door; radiator; power points; smoke detector; wood laminate flooring; stairs to 1st floor; doors opening to:

#### Cloakroom

5'0" x 2'10" (1.52 x 0.86)

Opaque UPVC double glazed window to front. 2 piece suite comprising low level WC; pedestal wash hand basin; radiator, ceiling down lights.

#### Lounge/Dining Room

15'10" x 13'10" (4.83 x 4.22)

UPVC double glazed French patio doors to rear, French door with side glass, opening to the rear garden, 2 x radiator; wood laminate flooring,;

#### Kitchen

10'8" x 7'1" (3.25 x 2.16)

UPVC double glazed window to front; modern kitchen with range of eye and base level units and drawers with ample work surface; single bowl single drainer sink unit with mixer taps; plumbing for automatic washing machine and dish washer, gas hob with an electric oven built under with extractor hood; tiling; power points; space for fridge freezer, radiator.

#### 1st Floor Landing

7'6" x 6'5" (2.29 x 1.96)

Access to loft space doors to all rooms.

#### Bedroom 1

13'11" x 12'1" (4.24 x 3.68)

2 x UPVC double glazed window to front built in airing cupboard housing combination boiler and additional

storage space, Maple style built in wardrobes with draws, radiator;

#### Bedroom 2

9'4" x 6'8" (2.84 x 2.03)

UPVC double glazed window to rear aspect; radiator; power points

#### Bedroom 3

8'4" x 6'11" (2.54 x 2.11)

UPVC double glazed window to rear aspect; radiator; power points.

#### Bathroom

6'2" x 5'3" (1.88 x 1.60)

Opaque UPVC double glazed window to side aspect; bathroom suite comprising white paneled bath with electric shower over; pedestal wash hand basin with mono bloc tap, low level WC; radiator, ceiling down lights.

#### Rear

35'0" x 25'0" (10.67 x 7.62)

Mainly laid to lawn garden with patio areas; bounded by paneled fencing.

#### Front

Lawn area, shrubs and borders, Drive leading to attached garage, providing parking for 2 cars to the side.

#### Garage

17'2" x 8'8" (5.23 x 2.64)

Up & Over Door power & Lighting, the garage is the last garage to the left.

#### Side

to the right of the property across the path. is a gated fenced off area that belongs to the house.



## Road Map



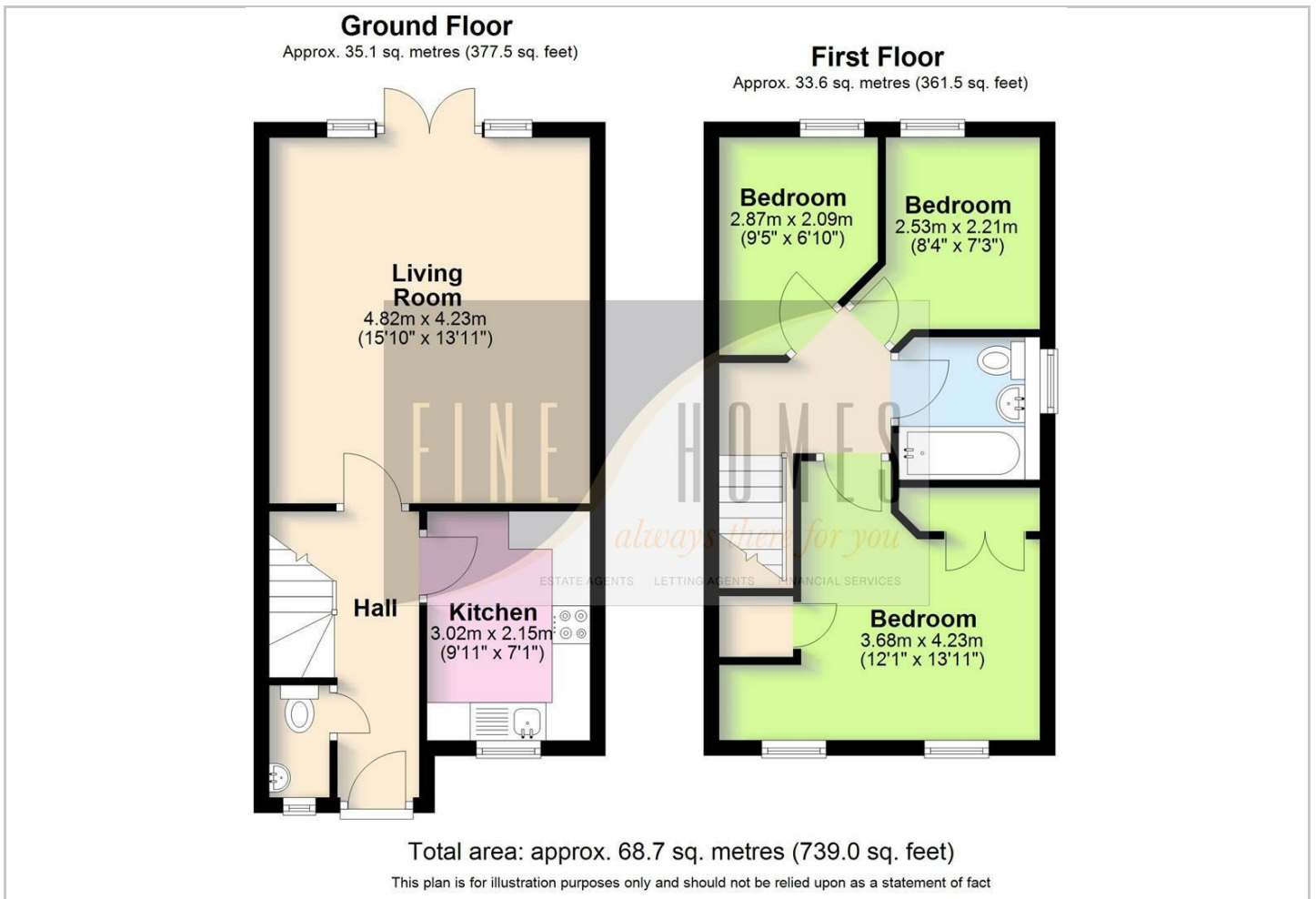
## Hybrid Map



## Terrain Map



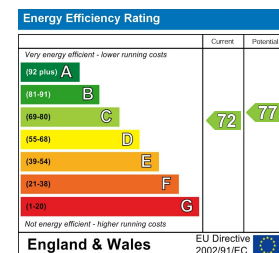
## Floor Plan



## Viewing

Please contact our Warwick Office on 01926 888838 if you wish to arrange a viewing appointment for this property or require further information.

## Energy Efficiency Graph



4 Cressida Close Warwick Gates Heathcote Warwick CV34 6DZ T. 01926 888838 F. 01926 885368 E. info@finehomes.org.uk [www.finehomes.org.uk](http://www.finehomes.org.uk)

Abco Properties Ltd trading as Fine Homes. Registered Office: Bank Gallery High Street Kenilworth Warwickshire CV8 1LY Registered No. 0529067 VAT No. 854905011

Whilst every effort has been made to ensure their accuracy, Fine Homes Estate Agents do not accept any errors in these details, nor do they constitute a contract. These details are issued on condition that all negotiations are conducted via Fine Homes Estate Agents

